

## For swing gates with leaves up to 2 m, surface mounted.

Electromechanical gear motor 24 Vdc.

### Gear motor characteristics:

- **reliable and silent:** thanks to the patented layout of the internal components and less moving parts
- **easy to install:** after the gear motor has been assembled, all electrical connections are made from above
- **user-friendly release** with personalised Nice key or standard lock (optional)
- pre-assembled, **travel stops** PLA13 in opening

### New control unit MC424:

- easy programming by pressing a single button
- clutch with anti-crush safety feature
- automatic memorization of limit switches in opening and closing with self-learning function
- pause time programming; partial opening; slowdown during opening and closing

**sophisticated electronics:** slowdown, obstacle detection system, can be linked to the 8,2 KOhm resistive sensitive edge.

**no blackout:** continues to work even during power failures using optional (PS124) batteries that fit inside the control unit.

### The kit contains:



### WG2024

2 surface-mounted electromechanical gear motors, with Nice key release



### FLO2R-S

2 transmitters 433.92 MHz, 2 channels



### MC424

1 control unit MC424 with plug-in receiver SMXI



### PLA13

travel stops for closing and opening

Code	Description	Pc./pallet
WINGO2024KCE	Kit for swing gates with leaves up to 2 m, surface mounted.	12

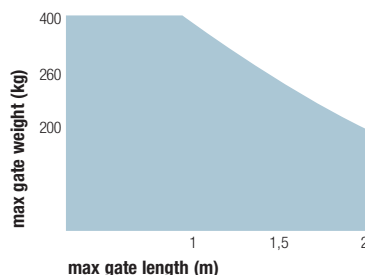
*N.B. The content of the package may vary; consult the retailer*

### Technical specifications

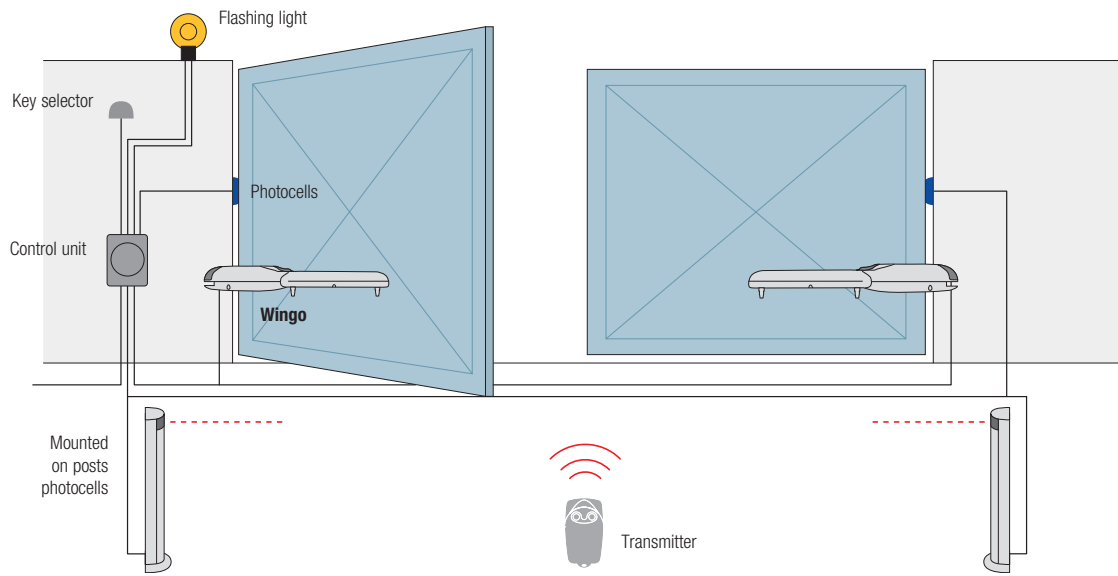
### WG2024

Electrical specifications		
Power	(Vdc)	24
Current absorbed (line)	(A)	3.5
Power absorbed	(W)	75
Incorporated capacitor	(µF)	-
Performance		
Speed	(m/s)	0.018
Torque	(N)	1500
Work cycle	(cycles/hour)	30
Dimensions		
Working temp.	(C°)	-20 ÷ +50
Protection level	(IP)	44
Dimensions	(mm)	98x95x770
Weight	(kg)	17

### Utilisation limits:



# Nice Wingo2024Kit



## Accessories



**PLA13**  
travel stops for closing  
and opening manoeuvres

Pc/Pack. 4



**PLA14**  
screw-adjustable  
rear bracket

Pc/Pack. 2



**PLA15**  
screw-adjustable  
front bracket

Pc/Pack. 2



**CM-B**  
lock with two metal keys  
compatible with SELE



**PS124**  
24V battery with  
built-in battery charger

Pc/Pack. 1



Approximate draft

The information shown in this publication is purely indicative. Nice reserves the right to make any modifications to the products as it sees fit.